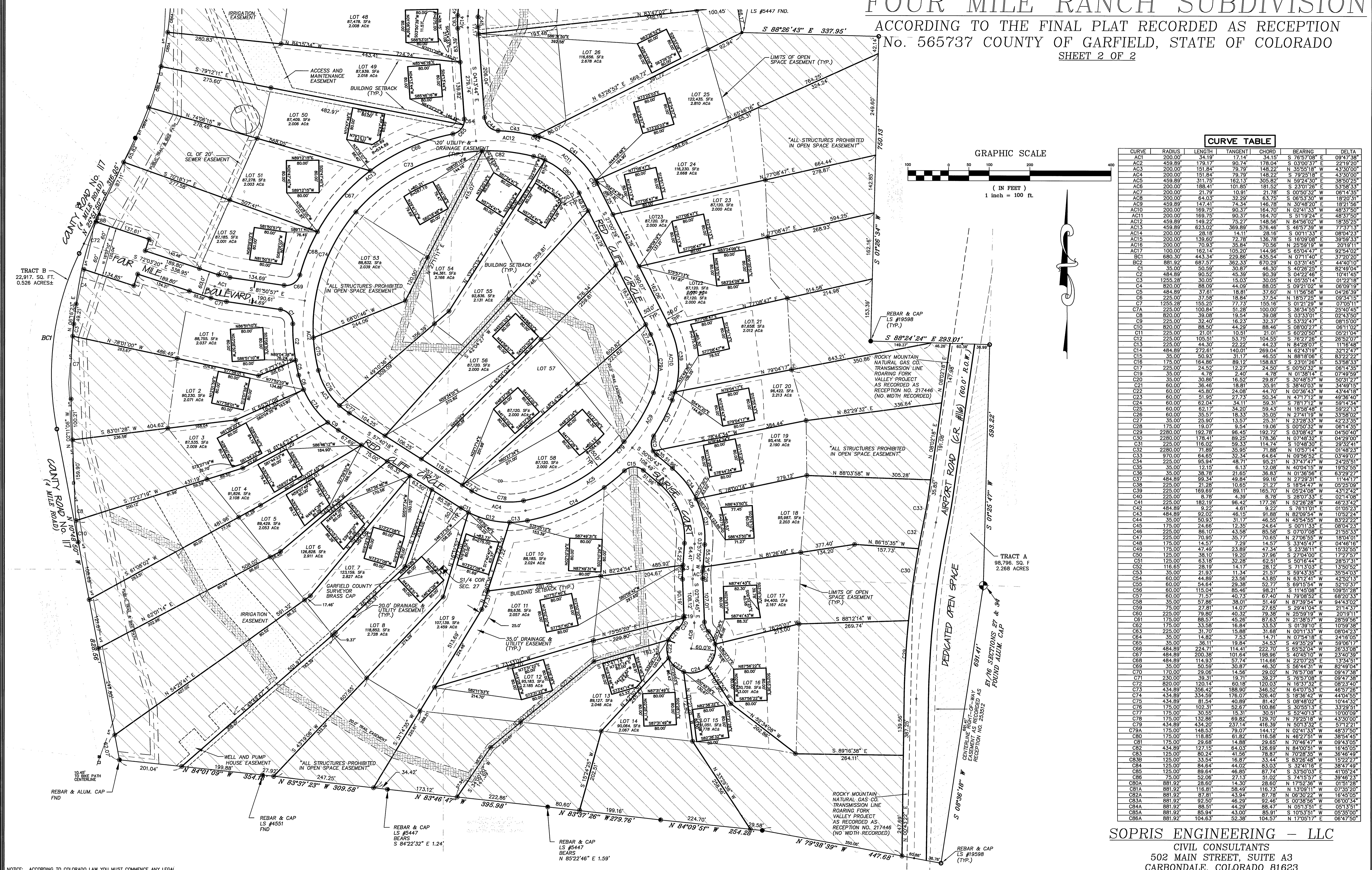
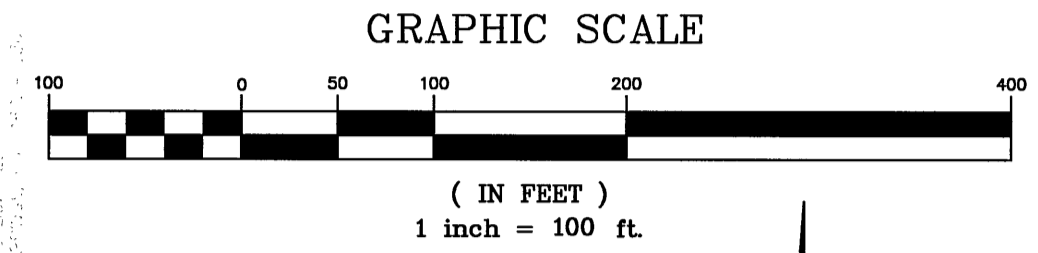


# FOUR MILE RANCH SUBDIVISION

ACCORDING TO THE FINAL PLAT RECORDED AS RECEPTION  
No. 565737 COUNTY OF GARFIELD, STATE OF COLORADO  
SHEET 2 OF 2



CURVE TABLE



CURVE	RADIUS	LENGTH	TANGENT	CHORD	BEARING	DELTA
AC1	17.14'	34.19'	34.15'	34.15'	S 76°58'08" E	09°43'38"
AC2	459.89'	179.17'	90.74'	178.04'	S 03°00'57" E	22°19'20"
AC3	200.00'	151.84'	79.79'	148.22'	N 35°55'18" W	43°30'00"
AC4	200.00'	151.84'	79.79'	148.22'	S 79°25'18" E	43°30'00"
AC5	200.00'	151.84'	79.79'	148.22'	N 59°51'50" E	43°30'00"
AC6	200.00'	151.84'	79.79'	148.22'	S 11°16'18" W	43°30'00"
AC7	200.00'	151.84'	79.79'	148.22'	N 06°14'35" W	06°14'35"
AC8	200.00'	64.03'	32.29'	63.75'	S 06°53'30" W	18°20'31"
AC9	459.89'	147.41'	74.34'	146.78'	N 30°48'20" E	18°21'58"
AC10	200.00'	169.75'	90.37'	164.70'	N 02°41'33" W	48°37'50"
AC11	200.00'	169.75'	90.37'	164.70'	S 51°19'24" E	48°37'50"
AC12	459.89'	149.22'	75.27'	148.56'	N 84°56'02" W	18°35'25"
AC13	459.89'	147.41'	74.34'	146.78'	S 48°57'39" W	77°37'13"
AC14	200.00'	28.18'	14.11'	28.18'	S 00°11'33" E	09°04'23"
AC15	200.00'	139.60'	72.78'	136.78'	N 16°09'08" E	39°59'33"
AC16	200.00'	70.93'	35.84'	70.56'	N 25°59'19" W	20°19'11"
AC17	100.00'	162.14'	105.20'	144.96'	S 65°04'47" E	92°54'02"
BC1	880.30'	444.34'	229.86'	435.54'	N 07°11'40" E	37°20'20"
BC2	881.92'	687.57'	362.33'	670.29'	N 03°31'45" E	44°40'10"
C1	35.00'	50.59'	30.87'	46.30'	S 40°26'25" E	82°49'04"
C2	484.89'	90.52'	45.39'	90.39'	S 04°22'46" E	10°41'45"
C3	1255.28'	30.05'	15.03'	30.05'	N 05°35'14" E	01°23'18"
C4	820.00'	88.08'	44.04'	88.08'	S 09°12'02" W	08°09'18"
C5	484.89'	37.61'	18.81'	37.60'	N 11°56'58" W	04°28'39"
C6	225.00'	37.58'	18.84'	37.54'	N 18°57'25" W	09°34'15"
C7	1255.28'	30.05'	15.03'	30.05'	S 01°21'29" W	07°05'11"
C7A	100.00'	100.00'	51.76'	51.76'	N 36°34'55" E	76°40'45"
C8	820.00'	39.08'	19.54'	39.08'	S 03°33'01" E	02°43'50"
C9	225.00'	32.40'	16.23'	32.37'	S 53°32'47" E	08°15'00"
C10	820.00'	88.50'	44.29'	88.46'	S 08°09'27" E	06°11'02"
C11	225.00'	32.40'	16.23'	32.37'	S 53°32'47" E	08°15'00"
C12	225.00'	105.51'	53.75'	104.55'	S 76°27'26" E	26°52'07"
C13	225.00'	44.30'	22.22'	44.23'	N 84°28'07" E	11°16'48"
C14	484.89'	272.61'	140.01'	269.04'	N 62°43'19" E	32°12'47"
C15	484.89'	272.61'	140.01'	269.04'	N 62°43'19" E	32°12'47"
C16	175.00'	164.86'	89.12'	158.82'	S 23°01'28" E	53°58'33"
C17	225.00'	24.52'	12.27'	24.50'	S 00°50'32" W	06°14'35"
C19	35.00'	4.78'	2.40'	4.78'	N 01°38'14" E	07°49'59"
C20	325.00'	30.86'	16.52'	29.87'	S 30°45'57" W	50°31'27"
C21	60.00'	36.46'	18.23'	36.31'	S 35°31'01" W	34°49'15"
C22	60.00'	45.80'	24.08'	44.70'	N 00°36'43" W	43°44'18"
C23	60.00'	51.95'	27.73'	50.34'	N 47°17'12" E	49°36'40"
C24	60.00'	62.04'	34.11'	59.51'	S 78°17'12" W	59°14'34"
C25	60.00'	62.04'	34.11'	59.51'	N 18°58'48" E	59°23'13"
C26	60.00'	35.57'	18.33'	35.05'	N 27°41'19" W	33°58'02"
C27	35.00'	25.90'	13.57'	25.31'	N 23°28'33" W	42°23'35"
C28	175.00'	19.07'	9.54'	19.06'	S 00°50'32" W	06°14'35"
C29	2280.00'	192.67'	95.45'	192.67'	S 07°07'02" E	04°52'40"
C30	2280.00'	178.41'	89.25'	178.36'	N 07°48'32" E	04°29'00"
C31	225.00'	116.02'	59.33'	114.74'	S 10°48'30" E	29°32'41"
C32	2280.00'	71.89'	35.95'	71.88'	N 10°57'14" E	01°48'23"
C33	970.00'	64.65'	32.34'	64.64'	N 69°56'52" E	03°49'07"
C34	225.00'	95.94'	48.71'	95.94'	S 88°48'17" W	24°25'51"
C35	35.00'	12.15'	6.13'	12.08'	N 40°04'15" W	19°52'55"
C36	35.00'	38.78'	21.65'	36.83'	N 01°36'56" E	63°29'27"
C37	484.89'	99.34'	49.84'	99.18'	N 27°29'51" E	11°44'17"
C38	225.00'	21.28'	10.85'	21.27'	S 18°44'47" W	05°25'09"
C39	225.00'	169.89'	89.11'	165.70'	N 05°24'08" W	43°12'42"
C40	225.00'	8.78'	4.39'	8.78'	S 28°07'33" E	02°14'08"
C41	225.00'	182.19'	96.42'	177.28'	N 52°26'28" W	46°23'42"
C42	484.89'	99.34'	49.84'	99.18'	S 76°11'01" E	01°03'23"
C43	484.89'	92.02'	46.15'	91.88'	N 82°09'54" W	10°52'24"
C44	35.00'	50.93'	31.17'	46.55'	N 45°44'55" W	83°22'22"
C45	175.00'	24.66'	12.35'	24.64'	S 00°11'33" E	06°04'23"
C46	2280.00'	85.10'	43.58'	85.08'	S 07°07'02" E	21°55'31"
C47	225.00'	70.95'	35.77'	70.55'	N 27°06'55" W	18°04'01"
C48	175.00'	14.57'	7.29'	14.57'	S 33°45'47" E	04°46'16"
C49	175.00'	47.49'	23.89'	47.34'	S 23°36'11" E	15°32'55"
C50	125.00'	36.10'	19.20'	37.96'	S 27°04'00" E	17°27'57"
C51	125.00'	63.18'	32.28'	62.51'	S 30°18'44" E	28°05'51"
C52	116.65'	28.19'	14.17'	28.12'	S 71°13'03" E	13°50'52"
C53	35.00'	21.93'	11.34'	21.57'	S 59°43'35" E	35°54'03"
C54	60.00'	44.89'	23.56'	43.85'	N 63°12'41" W	42°52'13"
C55	60.00'	44.89'	23.56'	43.85'	S 29°38'59" W	52°10'37"
C56	60.00'	115.04'	85.46'	98.21'	S 11°45'08" E	109°51'28"
C57	60.00'	71.57'	40.73'	67.40'	N 79°08'52" E	68°20'33"
C58	175.00'	57.86'	38.01'	51.49'	N 87°39'54" W	94°43'02"
C59	75.00'	21.72'	10.85'	21.72'	S 29°41'04" E	21°14'37"
C60	225.00'	79.80'	40.32'	79.38'	N 25°59'19" W	20°19'11"
C61	175.00'	88.57'	45.26'	87.63'	N 21°38'57" W	28°59'56"
C62	175.00'	33.58'	16.84'	33.53'	S 01°39'10" E	10°59'38"
C63	225.00'	36.00'	18.00'	36.00'	N 00°13'33" W	08°04'23"
C64	35.00'	14.82'	7.41'	14.71'	N 07°54'18" E	24°16'05"
C65	35.00'	36.11'	19.84'	34.53'	S 49°35'29" W	59°06'17"
C66	484.89'	224.71'	114.41'	222.70'	S 65°52'04" W	26°33'08"
C67	484.89'	200.38'	101.84'	198.96'	S 40°45'10" W	23°40'39"
C68	484.89'	114.82'	57.74'	114.86'	N 22°07'25" E	13°34'51"
C69	35.00'	50.59'	30.87'	46.30'	S 56°44'31" W	82°49'04"
C70	170.00'	29.06'	14.56'	29.02'	N 76°57'08" W	09°47'38"
C71	230.00'	39.31'	19.71'	39.27'	S 76°57'08" E	09°47'38"
C72	820.00'	120.14'	60.08'	120.03'	N 16°57'32" E	08°23'40"
C73	434.89'	356.42'	188.90'	346.52'	N 64°07'53" E	46°57'26"
C74	434.89'	334.59'	176.07'	326.40'	S 18°36'42" W	44°04'55"
C75	434.89'	81.54'	40.89'	81.42'	S 08°48'02" E	10°44'32"
C76	175.00'	100.86'	50.87'	100.86'	N 30°55'13" E	33°29'51"
C77	175.00'	30.55'	15.31'	30.51'	S 62°40'13" E	10°00'09"
C78	175.00'	132.86'	69.82'	129.70'	N 79°25'18" W	43°30'00"
C79	434.89'	434.20'	237.14'	416.39'	N 60°13'32" E	57°12'21"
C80	175.00'	118.85'	61.82'	116.58'	N 46°27'51" W	48°37'50"
C81	175.00'	118.85'	61.82'	116.58'	N 46°27'51" W	48°37'50"
C81A	175.00'	29.68'	14.88'	29.65'	N 70°46'47" W	09°43'05"
C82	434.89'	127.15'	64.03'	126.89'	N 84°00'51" W	16°45'05"
C83	125.00'	80.24'	41.56'	78.87'	N 70°28'35" W	36°46'49"
C83B	125.00'	128.00'	64.00'	128.00'	S 83°28'48" W	15°22'27"
C84	125.00'	84.84'	44.02'	83.03'	S 32°41'16" E	38°47'49"
C85	125.00'	89.64'	46.85'	87.74'	S 33°50'03" E	41°05'24"
C86	75.00'	52.06'	27.13'	51.02'	S 74°57'57" E	39°46'23"
C86A	881.92'	88.91'	44.30'	88.47'	N 05°13'51" E	05°13'51"
C87	881.92'	88.91'	44.30'	88.47'	N 05°13'51" E	05°13'51"
C87A	881.92'	88.91'	44.30'	88.47'	N 05°13'51" E	05°13'51"
C87B	881.92'	88.91'	44.30'	88.47'	N 05°13'51" E	05°13'51"
C87C	881.92'	88.91'	44.30'	88.47'	N 05°13'51" E	05°13'51"
C87D	881.92'	88.91'	44.30'	88.47'	N 05°13'51" E	05°13'51"
C87E	881.92'	88.91'	44.30'	88.47'	N 05°13'51" E	05°13'51"
C88	175.00'	104.63'	52.38'	104.57'	N 17°05'17" E	06°47'50"

SOPRIS ENGINEERING - LLC

CIVIL CONSULTANTS  
502 MAIN STREET, SUITE A3  
CARBONDALE, COLORADO 81623  
(970) 704-0311

NOTICE: ACCORDING TO COLORADO LAW YOU MUST COMMENCE ANY LEGAL ACTION BASED UPON ANY DEFECT IN THIS SURVEY WITHIN THREE YEARS AFTER YOU FIRST DISCOVER SUCH DEFECT. IN NO EVENT MAY ANY ACTION BASED UPON ANY DEFECT IN THIS SURVEY BE COMMENCED MORE THAN TEN YEARS FROM THE DATE OF CERTIFICATION SHOWN HEREON.